

# Phifertex<sup>®</sup>

BY PHIFER

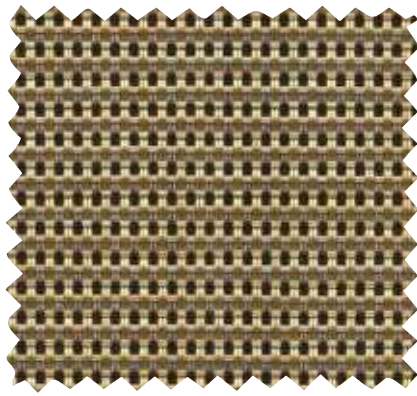
Phifertex Plus



Phifertex Plus



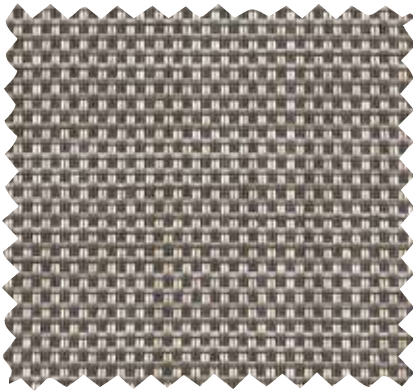
Spring Tweed Copper | NW6



Straw Mat Cognac | C03



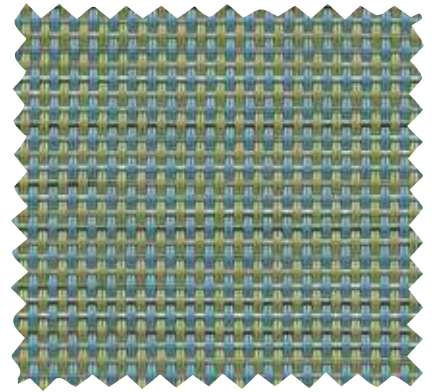
Burlap | BH4



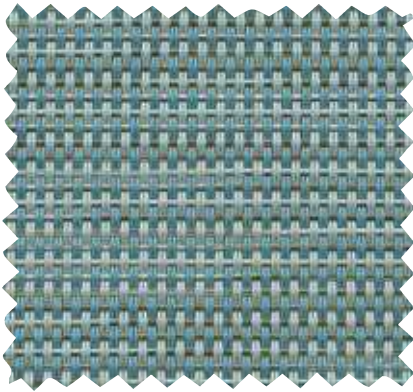
Mica Pearl | ZAY



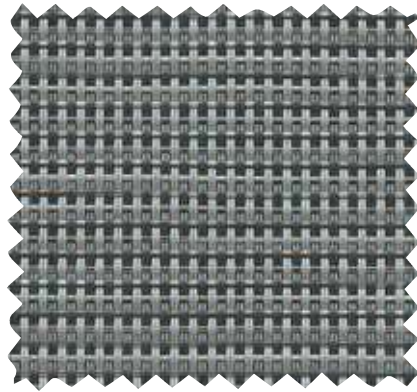
Copperlite | NAK



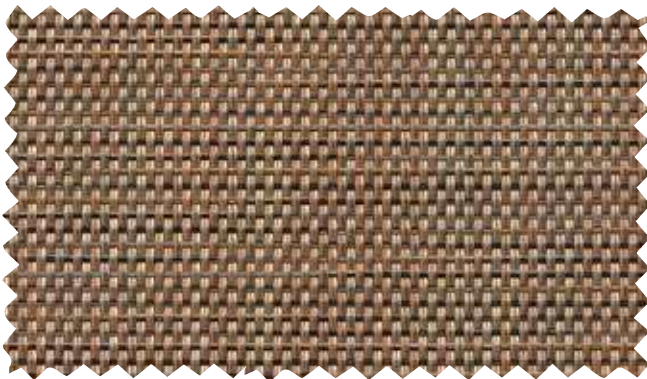
Straw Mat Blue | LBY



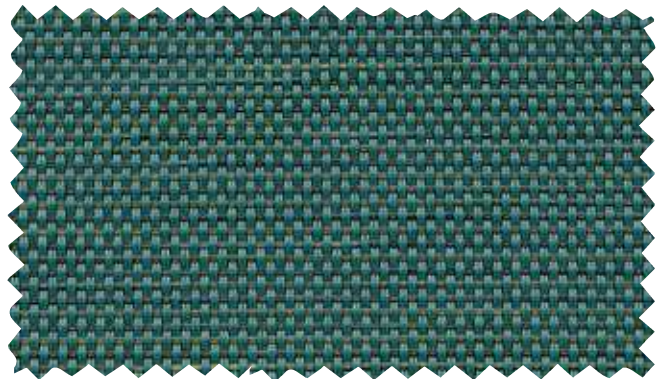
Madras Tweed Surf | LFW



Madras Tweed Harbor | LFV



Madras Tweed Terracotta | KBO

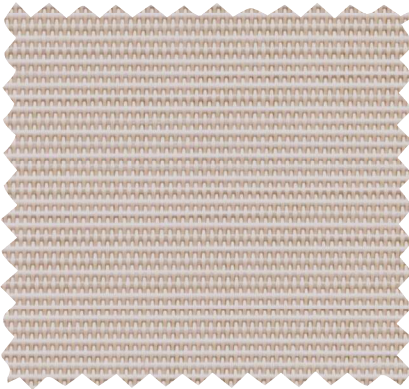


Madras Tweed Teal | DCX

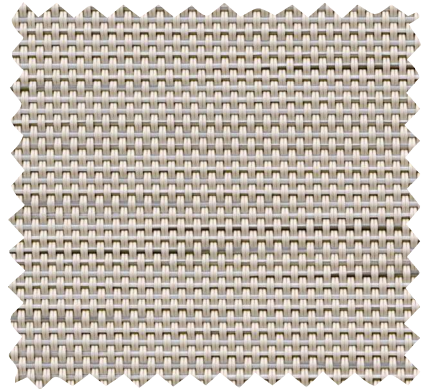
Phifertex Plus



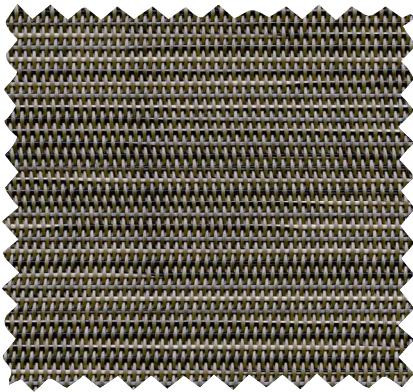
Flannel | ZEM



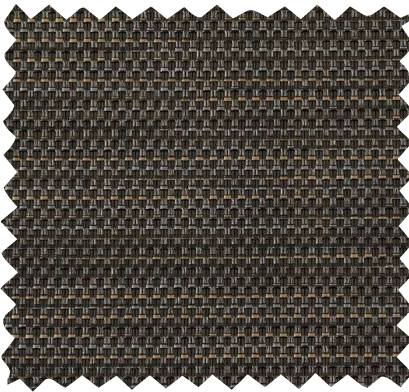
Dupione Puree | KDT



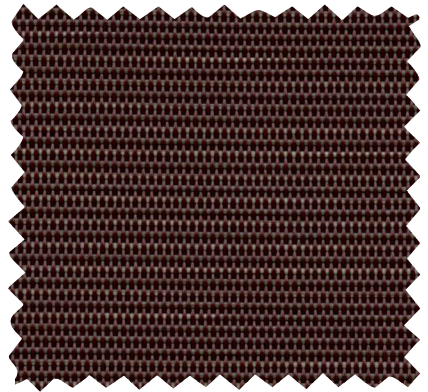
Madras Tweed Putty | NFC



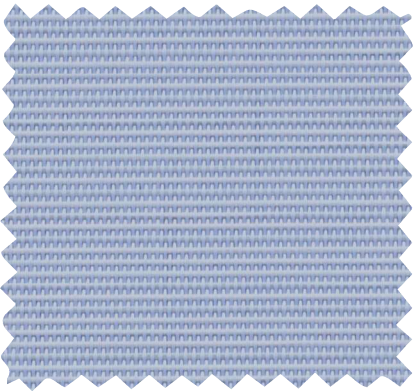
Dupione Brindle | NCE



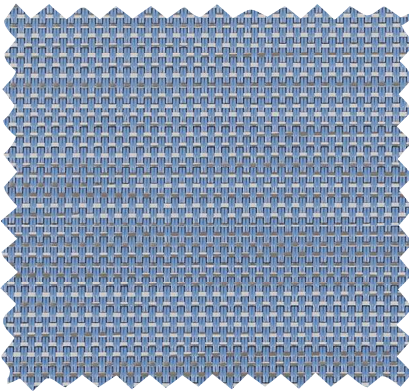
Madras Tweed Ember | ZEQ



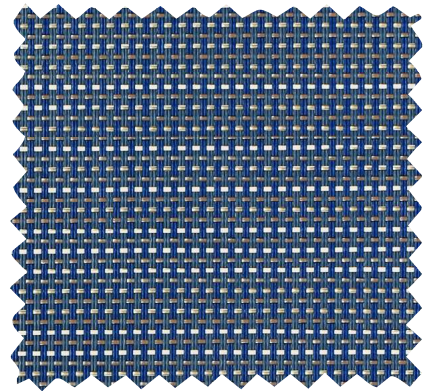
Dupione Andorra | KDU



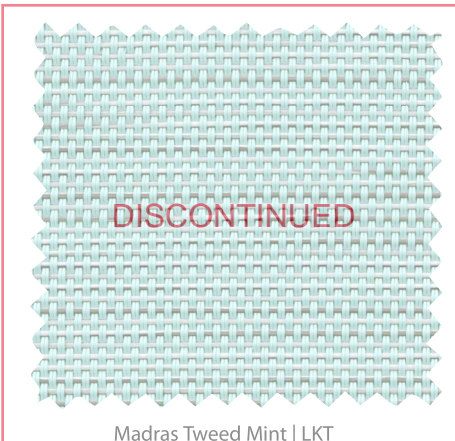
Dupione Ice Blue | LLP



Madras Tweed Cornflower | LKU



Madras Tweed Indigo | LDC



Madras Tweed Mint | LKT

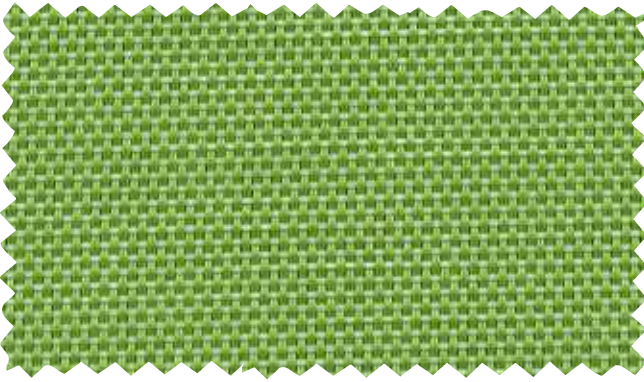


Madras Tweed Teal | DCX

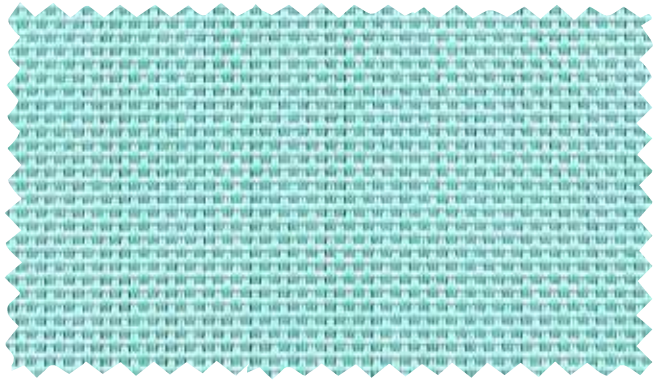


Madras Tweed Moss | DDV

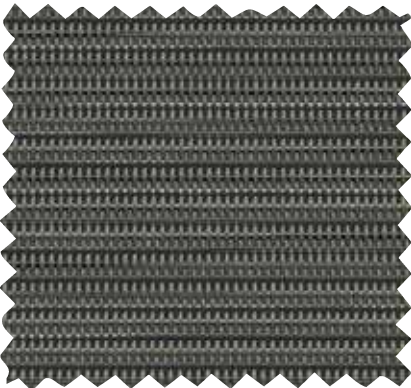
# Phifertex Plus



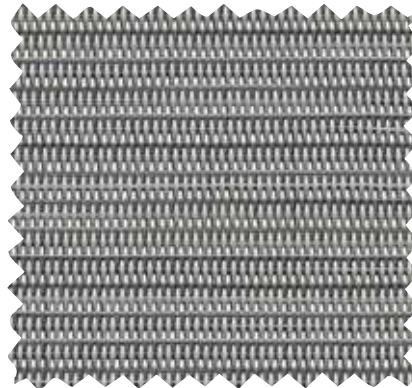
Citron | DCQ



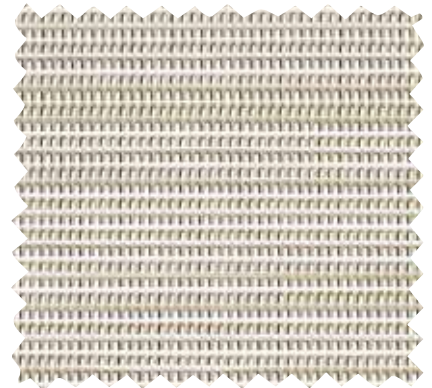
Breeze | LIR



Metallica Smoke | XXG



Metallica Platinum | XUP



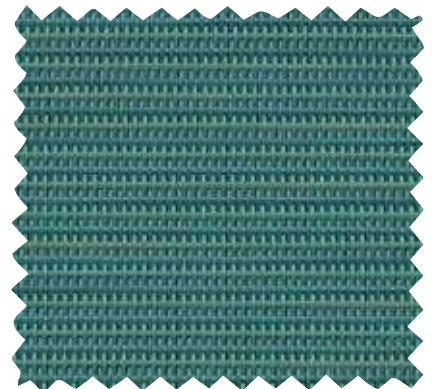
Metallica White | OHK



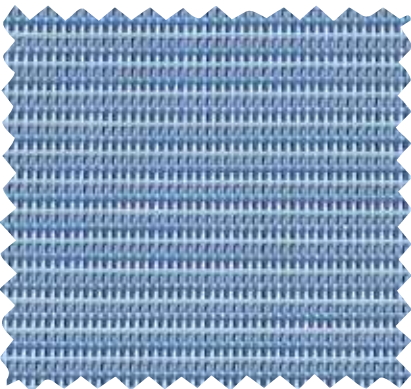
Dupioni Sapphire | L96



Metallica Salsa | KK3



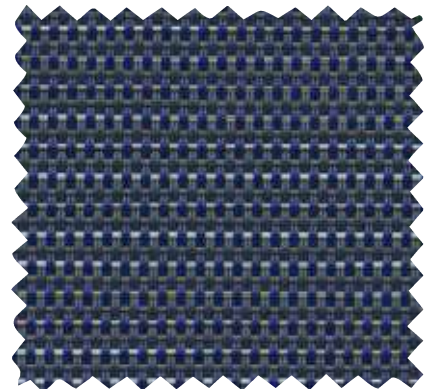
Metallica Lagoon | LGD



Dupioni Poolside | L37

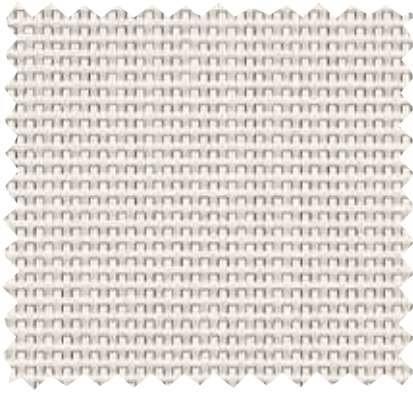


Dupioni Kiwi | DJ7

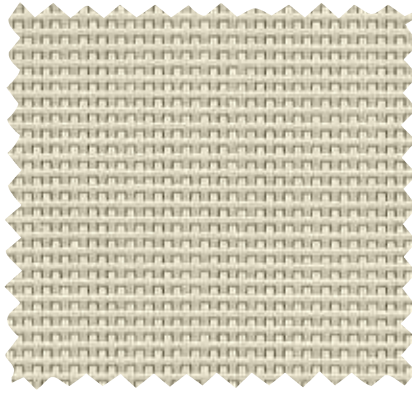


Tweed Indigo | LDC

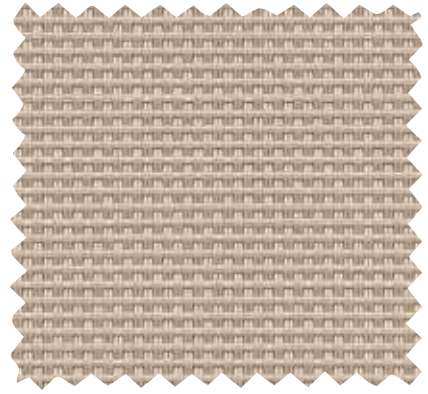
# Phifertex Plus



White | 000



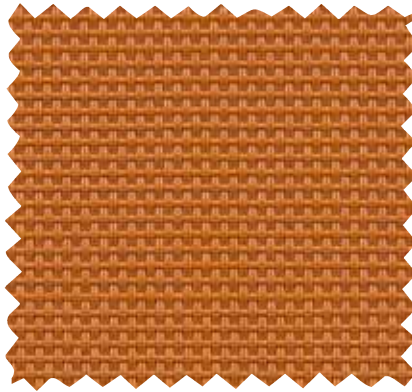
Grey Sand | X00



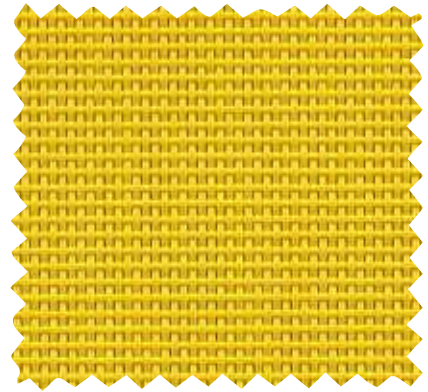
Stucco | 0Y3



Salsa | KG4



Snappy | KF4



Lemon Yellow | 406



Garden Green | DB6



Holly Green | CL1



Royal Blue | G00



Navy Pier | GP5



Black | X04

## FABRIC FEATURES

### DURABILITY/CLEANABILITY

Functional and durable, Phifertex fabrics offer excellent performance while withstanding spills, splatters and the hustle and bustle of high traffic areas. These fabrics are easy to maintain – easily cleaned with soap and water or 50/50 bleach to water solution.

### WARRANTY

Infinity Canopy offers a 5 year limited warranty for Phifertex Outdoor fabrics. This warranty covers the fabric becoming non-functional due to loss of dimensional stability from exposure to conditions including sunlight, mildew, rot and normal atmospheric conditions. The warranty does not cover damage to the fabric from any source nor does it cover gradual fading or discoloration. This warranty does not cover the cost of labor or other consequential or incidental expenses.



### GREENGUARD

GREENGUARD Certification ensures products have met some of the world's most rigorous and comprehensive standards for low emissions of volatile organic compounds (VOCs) into indoor air. Phifer was the first manufacturer in the outdoor fabric industry to achieve GREENGUARD certification. Certification is completely voluntary and ensures that the highest industry standards are being applied to maintain indoor air quality for the health and safety of building occupants.



### MICROBAN®

Phifertex fabrics are the only outdoor furniture fabrics in the world to include Microban protection. Microban antimicrobial protection works continuously to inhibit the growth of bacteria, mold and mildew that can cause stains, odors and product deterioration.



- Microban antimicrobial protection is infused into Phifertex fabrics for lasting protection that won't wash off or wear away for the lifetime of the product.
- Phifertex fabrics infused with Microban antimicrobial technology are ideal for any commercial or residential environment where microbes are a concern, including healthcare, hospitality, home, office, schools and institutions.

### FLAME RETARDANCE

- National Fire Protection Association, NFPA No. 101, "Life Safety Code", Class "A" rating. (Tested in accordance to ASTM E84, Surface Burning Characteristics of Building Material.) 17x11 (ASTM E84-16), 25x25 (ASTM E84-15b), 37x15 (ASTM E84-16), Plus (ASTM E84-15b)
- International Building Code (IBC), Section 803.1.1, Class "A" rating (Tested in accordance to ASTM E84).
- Upholstered Furniture Action Council Fabric Classification Test Method 1990 (UFAC) - Class "1" Rating.
- Federal Motor Vehicles Safety Standards, Section 571.302, Standard Number 302 (FMVSS 302), Flammability of Interior Materials.
- California Technical Bulletin 117-2013, Section 1, Cover Fabric Test.

